

A window with light beige curtains is shown. The curtains are partially open, revealing a view of a swimming pool and a garden. The pool is in the foreground, and the garden is in the background. The sky is blue and there are some trees. The overall scene is bright and sunny.

# CATALOGUE

## READY MADE CURTAINS

**FINISHING  
TOUCHES**  
FOR YOUR HOME

## **FINISHING TOUCHES READY MADE CURTAINS**

### *Premium Style Curtains*

Our ready made curtains are an instant, stylish and cost effective solution when decorating your windows.

While we all enjoy the outdoors, we don't necessarily need the glare from the sunlight interfering with our lifestyle.

Whether your aim is to lower the general light level, provide privacy or simply create a cosy atmosphere, our ready to hang curtains are the perfect choice.

We offer a variety of exclusive designs created for simple yet attractive curtains, with an easy to live with colour palette to suit most décor schemes.

Textured weaves, prints, jacquards and sheer designs are available in standard and extra length, in eyelet and regular tape headings.

For your suitability we include lined, unlined, sheer and blackout solutions.

Each design and style option carries its own unique benefits.

Standard length curtains suit most homes where standard window and door frames are used. In many modern homes higher ceiling and window heights require extra length curtains.

Eyelet curtains - modern, simple, stylish.

Quick and easy to hang directly onto a curtain rod.

We make use of stainless steel 40mm eyelets.

Available in standard length (220cm) and extra length (252cm).

Tape curtains - versatile attractive style.

Gathers neatly and can be hung on regular curtain tracks, with pelmets, rebated or clip-on rods.

Available in standard length (218cm) and extra length (250cm).

Woven pocket tape ensures a neat pleat that gathers easily to the desired width.

3 pocket levels allow for small adjustments in the height of the curtains.

Sheer curtains are translucent and allow light to enter the room while still providing some degree of privacy and basic level of UV protection.

These are ideal for layered window solutions when used together with blackout or blackout curtains.

Sheer curtains can also be lined to enhance the texture and weave of the curtain.

Lining improves privacy, UV protection and insulation levels.

Blackout and blackout lining options can be used when more light reduction is required. These types of fabrics are beneficial for privacy, UV protection, insulation and reduction in noise levels.

## Taped Curtains – versatile, attractive style



Featuring - design Woodstock Mist



# Tape Curtains



## **PRODUCT INFO & BENEFITS**

Curtains with tape headings are versatile and cost effective.

Available in standard length (218cm) and extra length (250cm).

Standard length suits most homes where standard window and door frames are used, while extra length can be used where higher ceilings require longer length curtains.

Our 3 string woven pocket tape is a superior quality heading tape.

The strings pull easily to create a very neat pleat, improving the overall look of the ready made.

Woven pockets allow curtain hooks to be added quickly and easily.

Tape headings allow the installer to gather the curtain to the desired fullness.

Curtain hooks can be fitted to any of the 3 woven pocket levels to accommodate slight height variances, without having to alter the curtain. Adjustments of 2-5cm can be accommodated.

Taped curtains can be used on regular curtains tracks, with pelmets, rebated or clip-on rods.

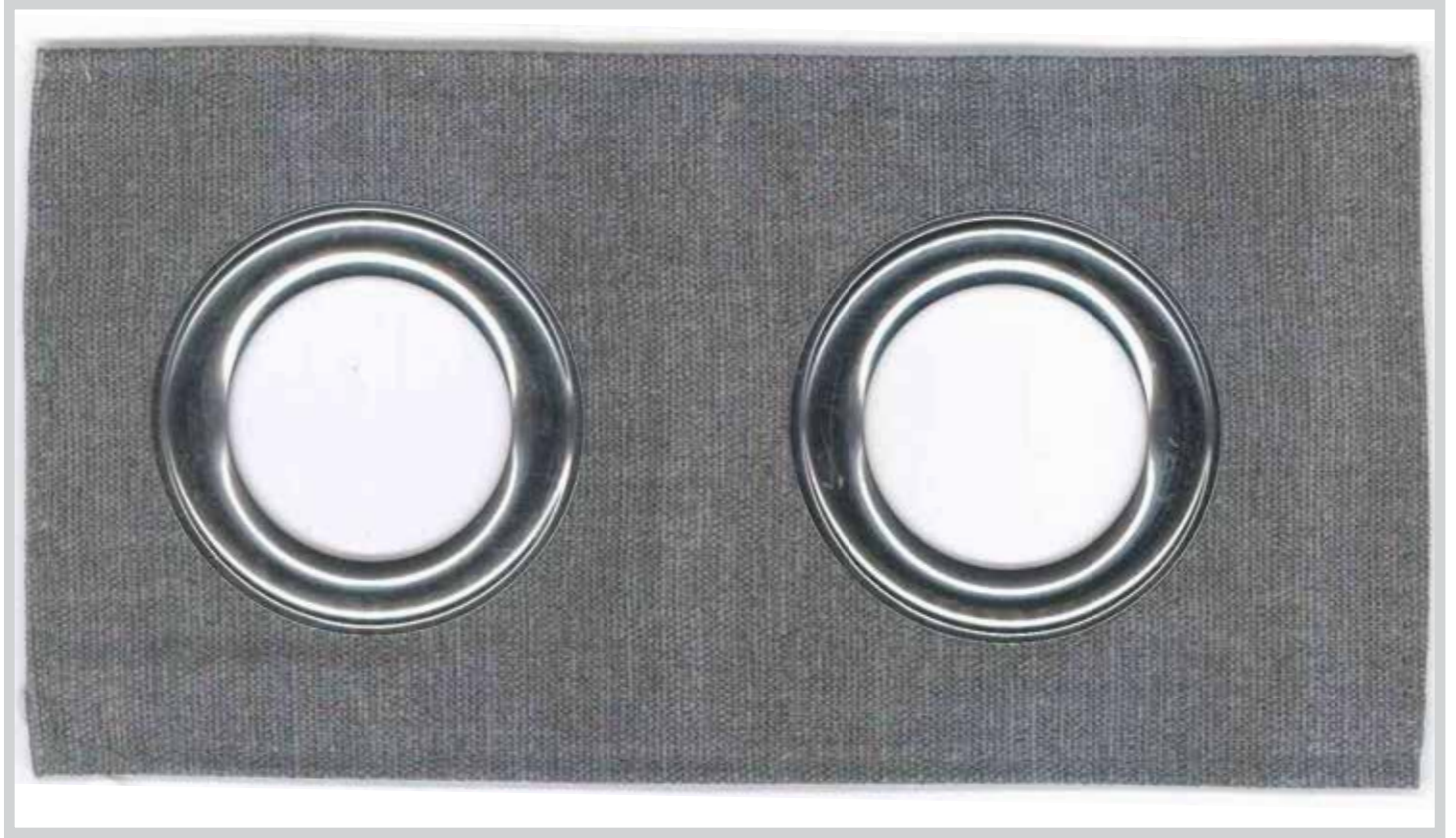
Make use of the top row of pockets when using rebated or clip-on rods to allow the curtain to hang below the rod and glide easily.

# Eyelet Curtain - *simple, stylish, elegant*



Featuring - Willow Silvery

# Eyelet Curtains



## **PRODUCT INFO & BENEFITS**

Curtains with eyelet headings provide a modern look and are conveniently quick and easy to hang.

We make use of stainless steel 40mm eyelets.

Eyelet curtains create a neat look whether the curtains are stacked, partially or fully open.

These can be hung directly onto any curtain rod fixture and glide easily on the rod.

Curtains can be drawn quickly and easily when privacy is required.

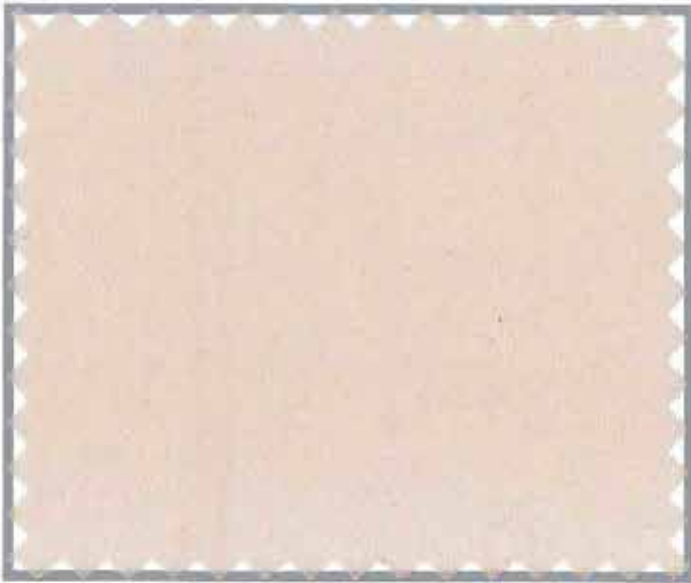
We offer a standard drop (220cm) as well as an extra length (252cm) to accommodate your window and/or ceiling height.



# Aerial – *unlined sheer*



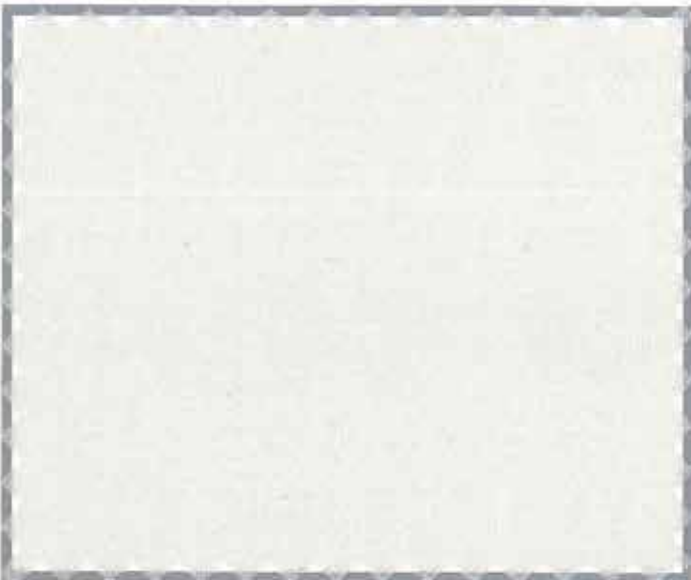
Ice



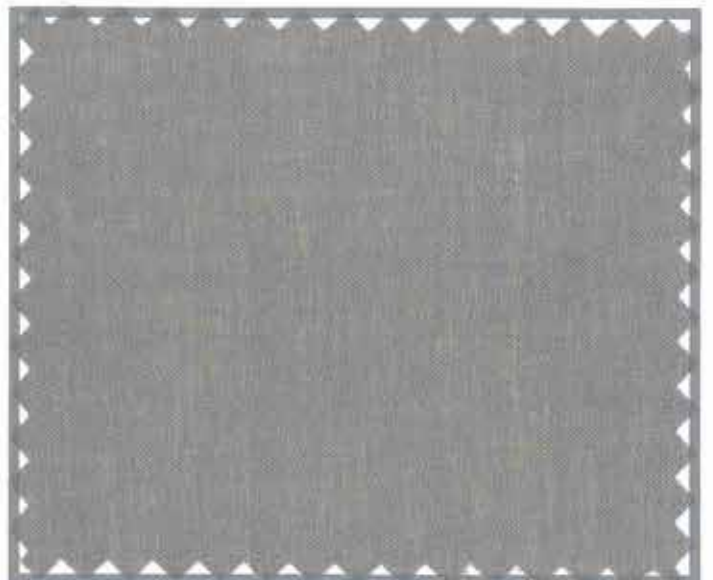
Stone



Urchin



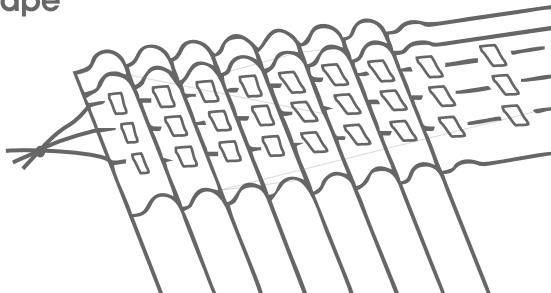
Fog



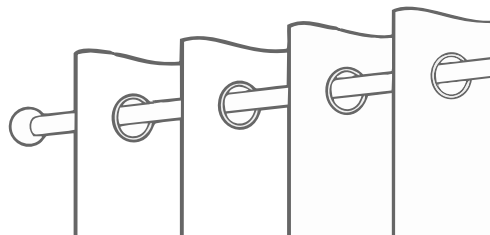
Steel

# Aerial – *unlined sheer*

Tape



Eyelet



## **AVAILABLE SIZES - TAPE**

285 x 218cm - standard tape unlined

285 x 250cm - standard tape unlined

500 x 218cm - standard tape unlined

500 x 250cm - standard tape unlined

## **AVAILABLE SIZES - EYELETS**

285 x 220cm - eyelets unlined *(18 eyelets per curtain)*

285 x 252cm - eyelets unlined *(18 eyelets per curtain)*

## **AVAILABLE COLOURS**

- Ice
- Stone
- Urchin
- Fog
- Steel

## **STUART GRAHAM FABRIC REFERENCE**

- Storm Ice
- Storm Stone
- Storm Urchin
- Storm Fog
- Storm Steel

## **PRODUCT INFO**

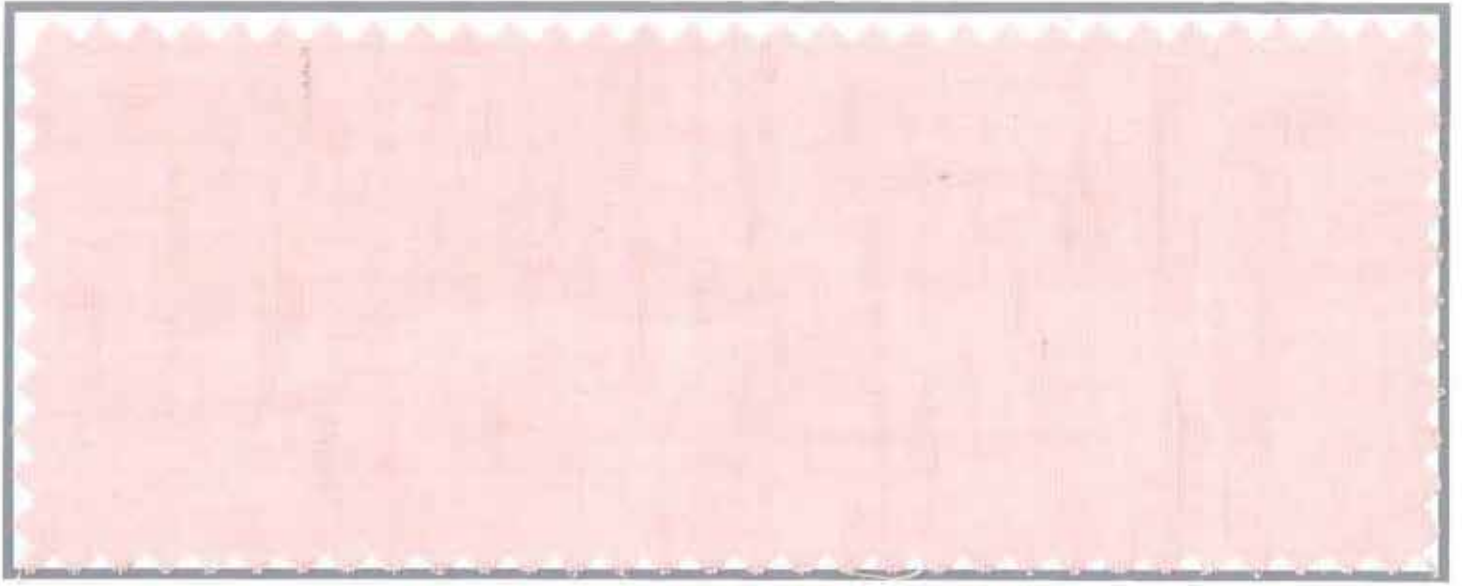
100% Polyester

## **WASH CARE INSTRUCTIONS**

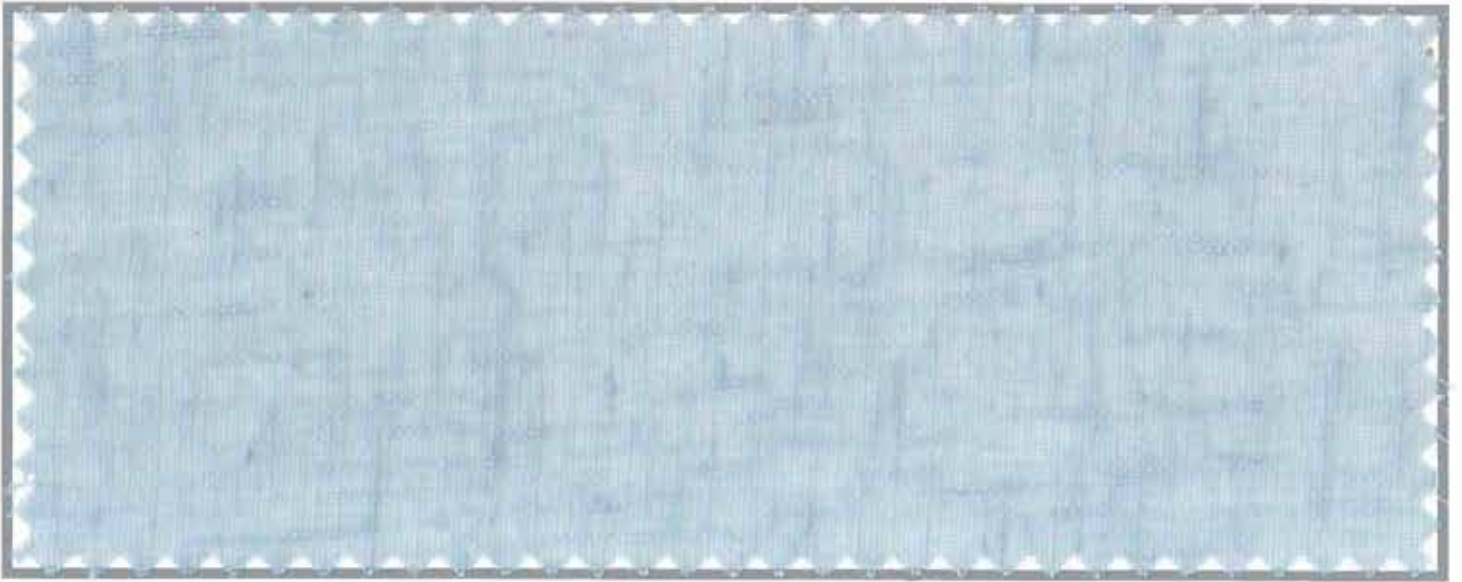
Handwash or dry clean  
Line dry  
Cool iron  
Do not bleach  
Do not tumble dry



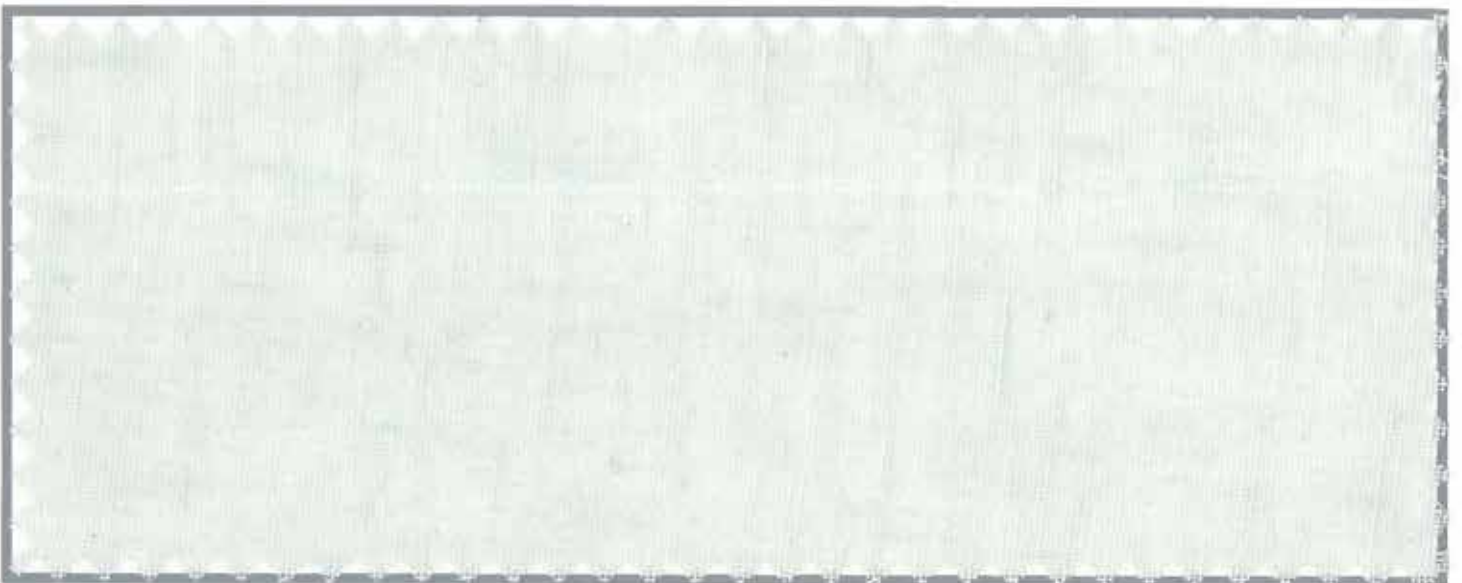
# Muslin – *lined sheer*



Blush



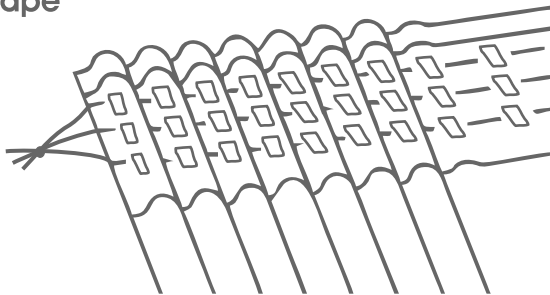
Capri



Mint

# Muslin – *lined sheer*

## Tape



## AVAILABLE SIZES - TAPE

285 x 218cm - standard tape lined

285 x 250cm - standard tape lined

## AVAILABLE COLOURS

- Blush
- Capri
- Mint

## STUART GRAHAM FABRIC REFERENCE

- Muslin Blush
- Muslin Capri
- Muslin Mint

## PRODUCT INFO

100% Polyester

Lined with white polycotton lining

## WASH CARE INSTRUCTIONS

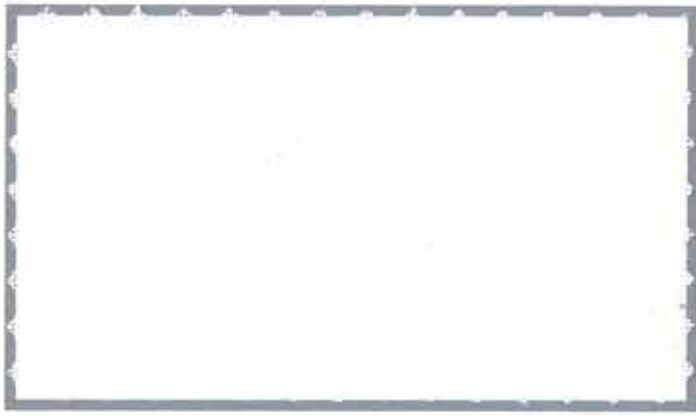
Cool wash or

Dry clean professionally

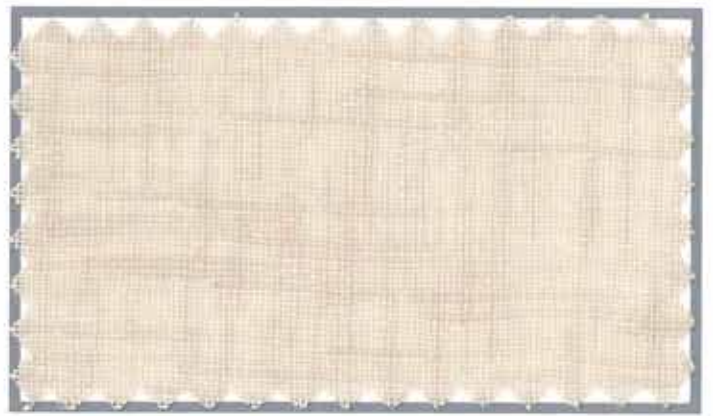
Cool iron

Do not bleach

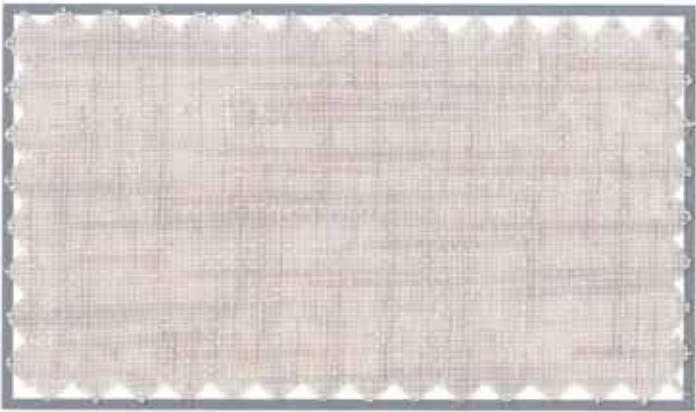
# Willow - *textured sheer*



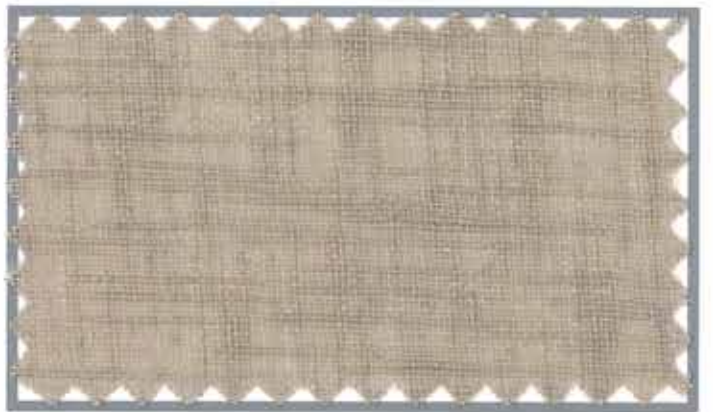
White



Dune



Sterling



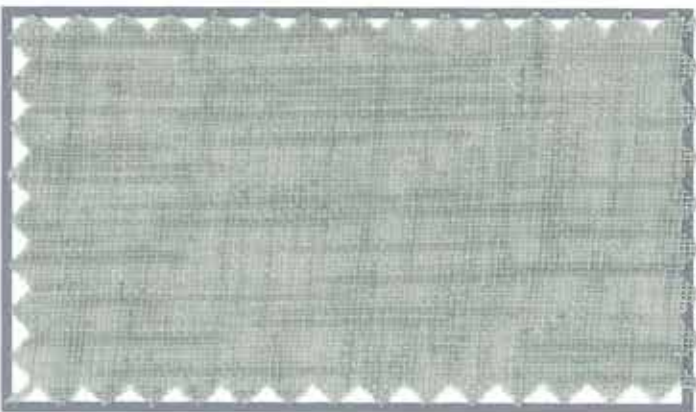
Greystone



Silvery



Charcoal



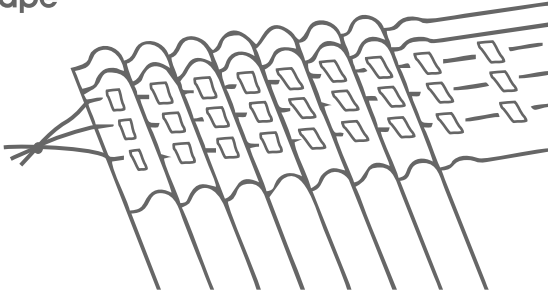
Ocean



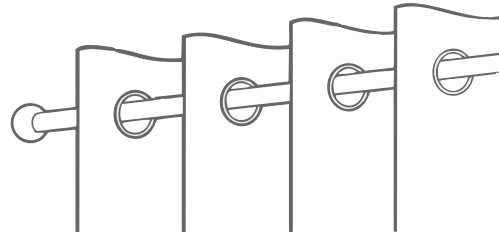
Lagoon

# Willow – *textured sheer*

## Tape



## Eyelet



### AVAILABLE SIZES - TAPE

- 285 x 218cm - standard tape lined
- 285 x 250cm - standard tape lined

### AVAILABLE SIZES - EYELETS

- 230 x 220cm - eyelets lined (14 eyelets per curtain)
- 230 x 252cm - eyelets lined (14 eyelets per curtain)

### AVAILABLE COLOURS

- White
- Greystone
- Silvery
- Lagoon
- Ocean
- Dune
- Sterling
- Charcoal

### STUART GRAHAM FABRIC REFERENCE

- Question White
- Question Greystone
- Question Silvery
- Question Lagoon
- Question Ocean
- Question Dune
- Question Sterling
- Question Charcoal

### PRODUCT INFO

100% Polyester  
Lined with white polycotton lining

### WASH CARE INSTRUCTIONS

Hand/Machine wash or  
Dry clean professionally  
Warm iron  
Do not bleach  
Do not tumble dry



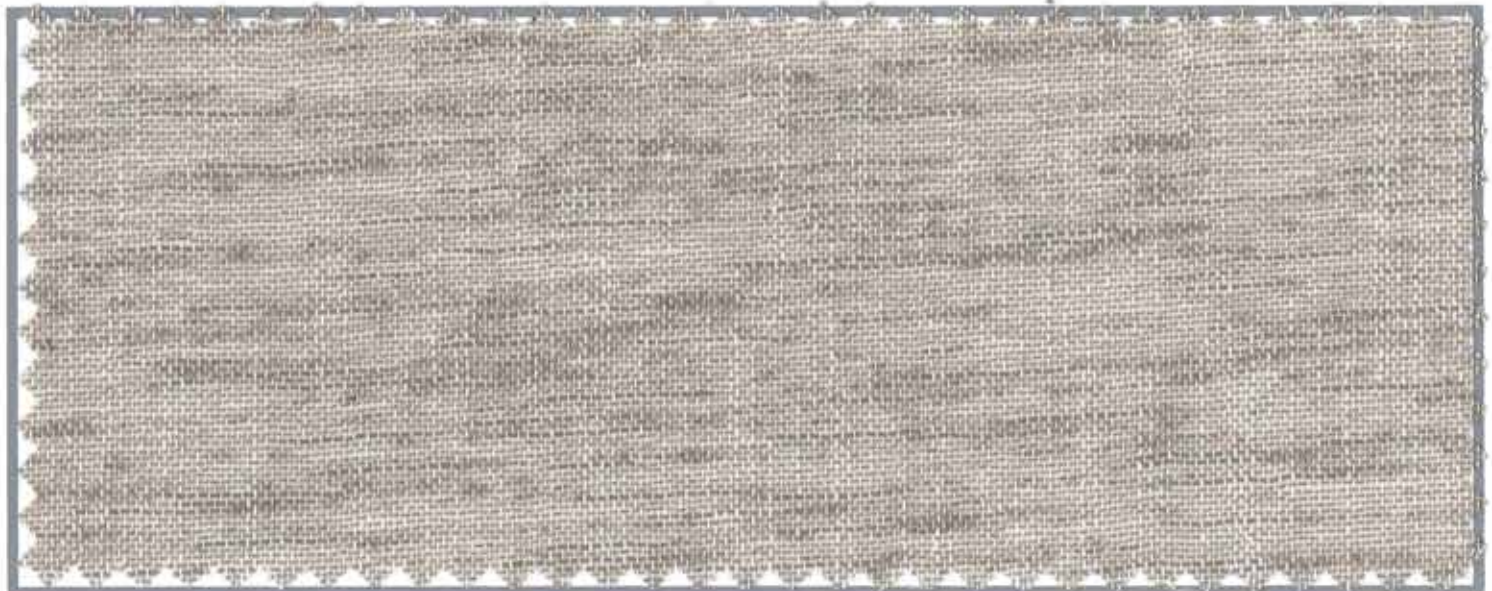
## Whimsical – *textured sheer*



Windrift



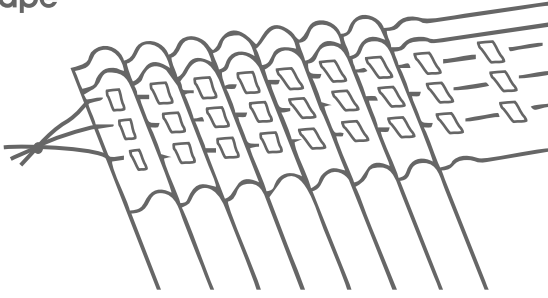
Mist



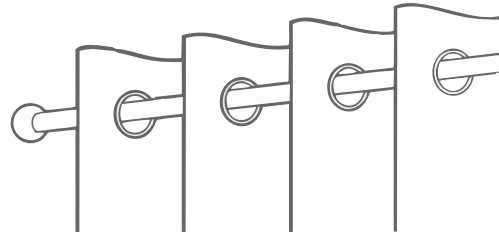
Gravel

# Whimsical – *textured sheer*

Tape



Eyelet



## AVAILABLE SIZES - TAPE

285 x 218cm - standard tape lined

285 x 250cm - standard tape lined

## AVAILABLE SIZES - EYELETS

230 x 220cm - eyelets lined (14 eyelets per curtain)

230 x 252cm - eyelets lined (14 eyelets per curtain)

## AVAILABLE COLOURS

- Windrift
- Mist
- Gravel

## STUART GRAHAM FABRIC REFERENCE

- Misty Windrift
- Misty Mist
- Misty Gravel

## PRODUCT INFO

100% Polyester

Lined with white polycotton lining

## WASH CARE INSTRUCTIONS

Handwash or

Dry clean professionally

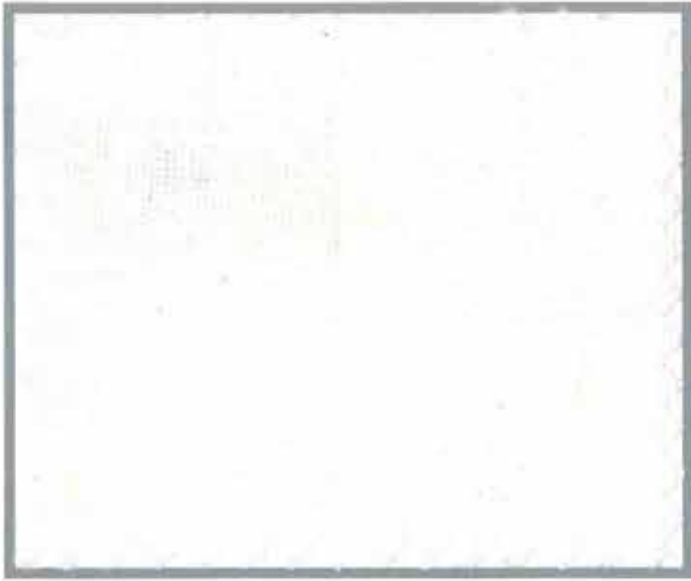
Cool iron

Do not tumble dry

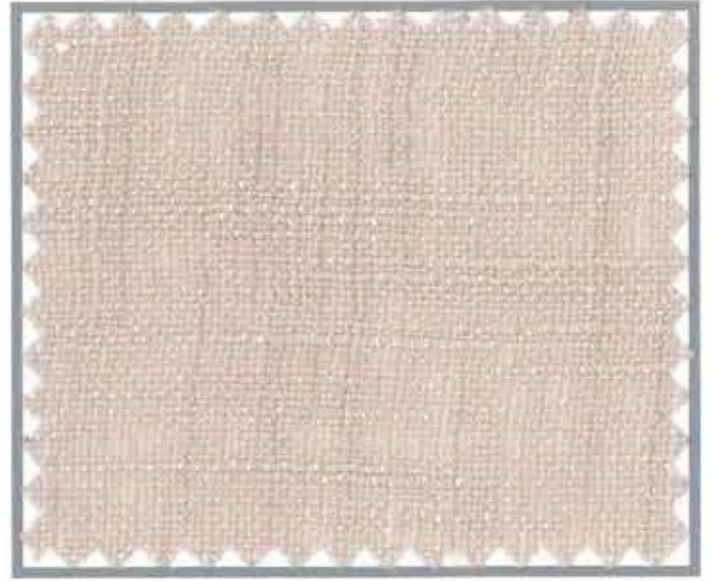
Do not bleach



# Woodstock – *textured sheer*



White



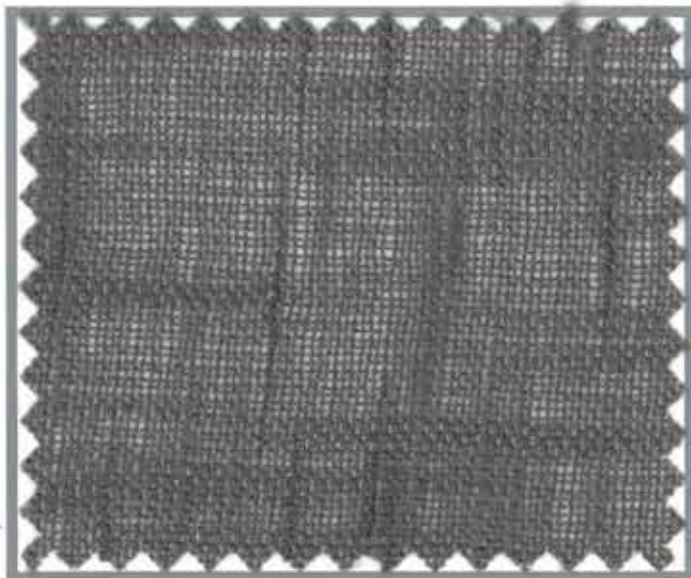
Linen



Mist



Greystone



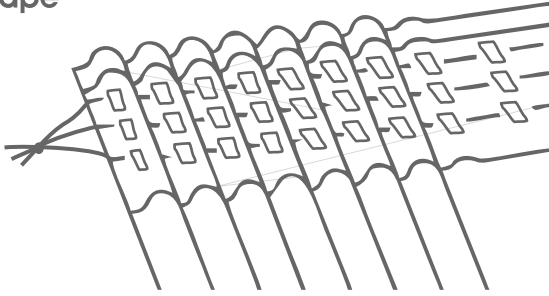
Graphite



Duck Egg

# Woodstock – *textured sheer*

## Tape



## AVAILABLE SIZES - TAPE

285 x 218cm - standard tape lined

285 x 250cm - standard tape lined

## AVAILABLE COLOURS

- White
- Linen
- Mist
- Greystone
- Duck Egg
- Graphite

## STUART GRAHAM FABRIC REFERENCE

- Cloud White
- Cloud Linen
- Cloud Mist
- Cloud Greystone
- Cloud Willow
- Cloud Graphite

## PRODUCT INFO

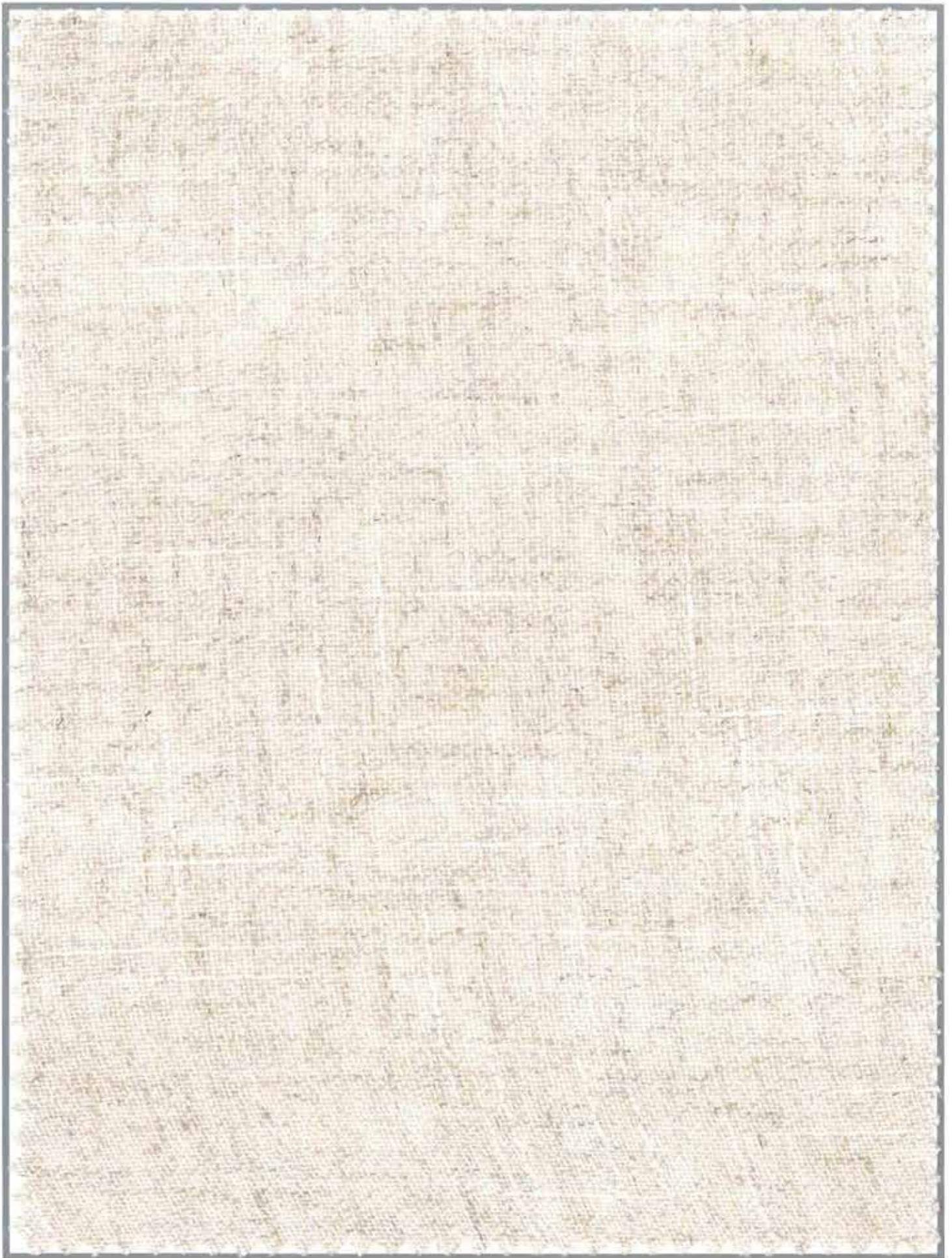
100% Polyester  
Lined with white polycotton lining.

## WASH CARE INSTRUCTIONS

Hand/Machine wash or  
Dry clean professionally  
Cool iron  
Do not steam  
Do not bleach  
Do not tumble dry



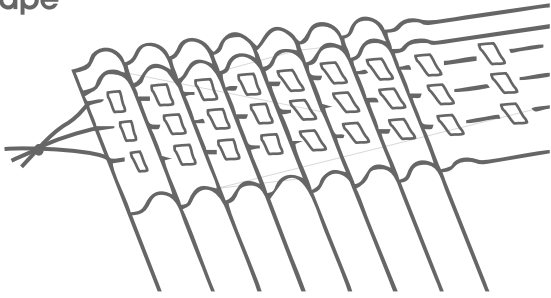
# Blake - *linen texture*



Linen

# Blake – *linen texture*

## Tape



## AVAILABLE SIZES - TAPE

285 x 218cm - standard tape lined

285 x 250cm - standard tape lined

## AVAILABLE COLOURS

- Linen

## STUART GRAHAM FABRIC REFERENCE

- Discreet Linen

## PRODUCT INFO

50% Polyester/50% Linen

Lined with cream polycotton lining.

## WASH CARE INSTRUCTIONS

Wash 30 degrees or

Dry clean professionally

Warm iron

Do not bleach

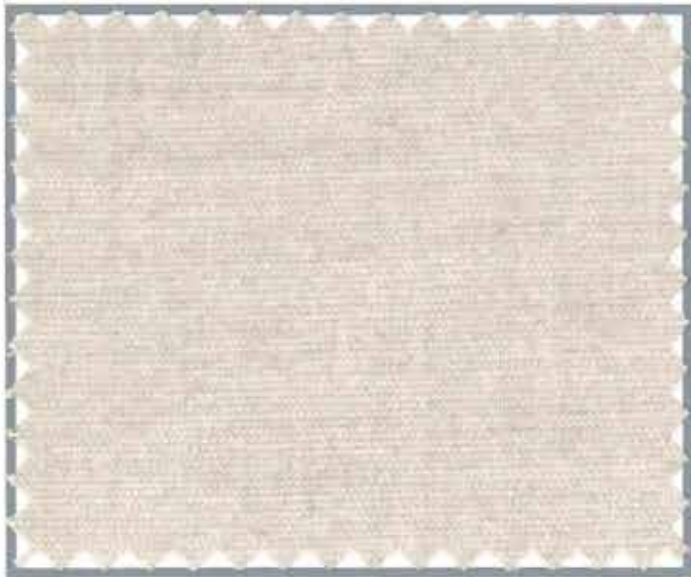
Do not tumble dry



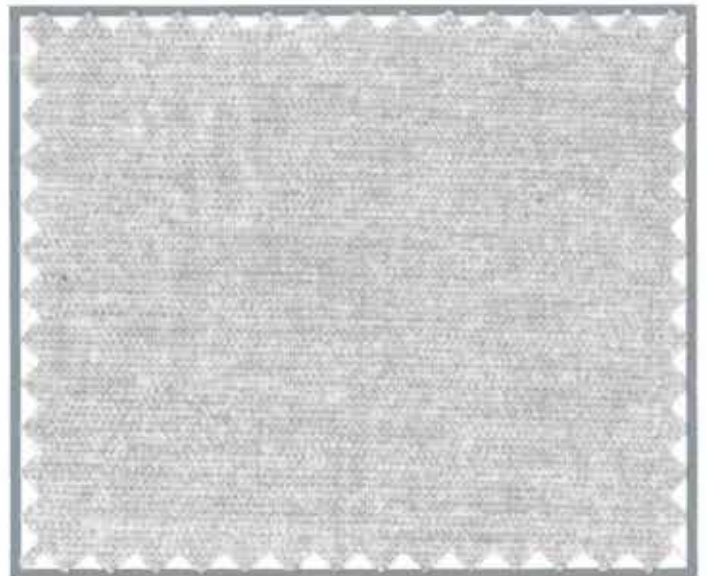
# Colourwash - *printed texture*



Grey



Canvas



Sterling



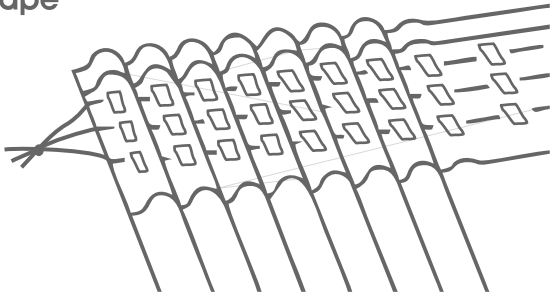
Charcoal



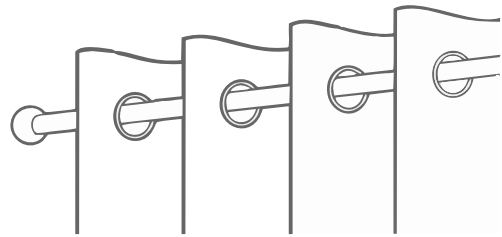
Denim

# Colourwash *- printed texture*

Tape



Eyelet



## AVAILABLE SIZES - TAPE

230 x 218cm - standard tape lined

230 x 250cm - standard tape lined

## AVAILABLE SIZES - EYELETS

230 x 220cm - eyelets lined *(14 eyelets per curtain)*

230 x 252cm - eyelets lined *(14 eyelets per curtain)*

## AVAILABLE COLOURS

- Grey
- Canvas
- Sterling
- Charcoal
- Denim

## PRODUCT INFO

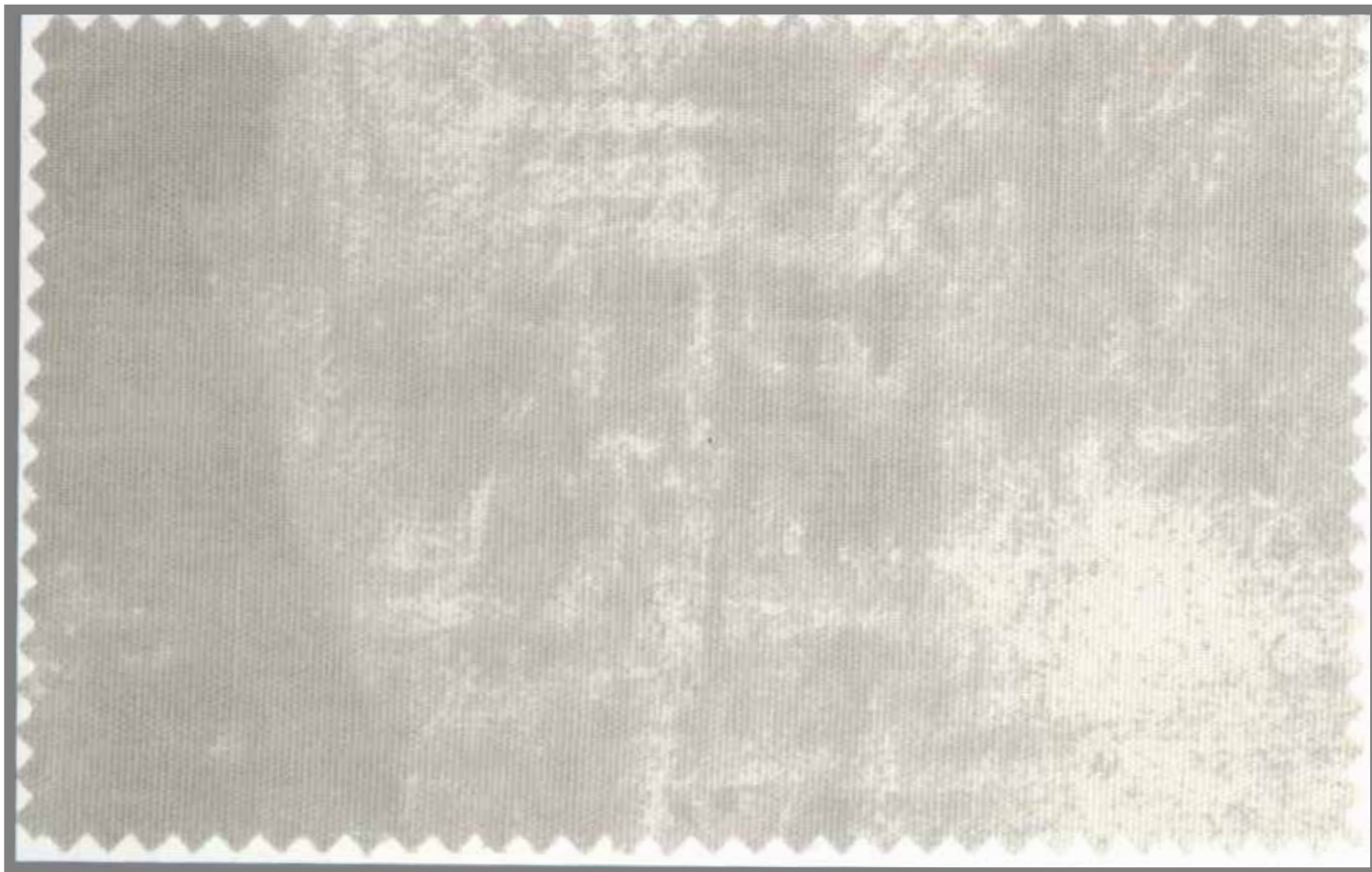
52% Polyester/48% Cotton print  
Lined with white polycotton lining.

## WASH CARE INSTRUCTIONS

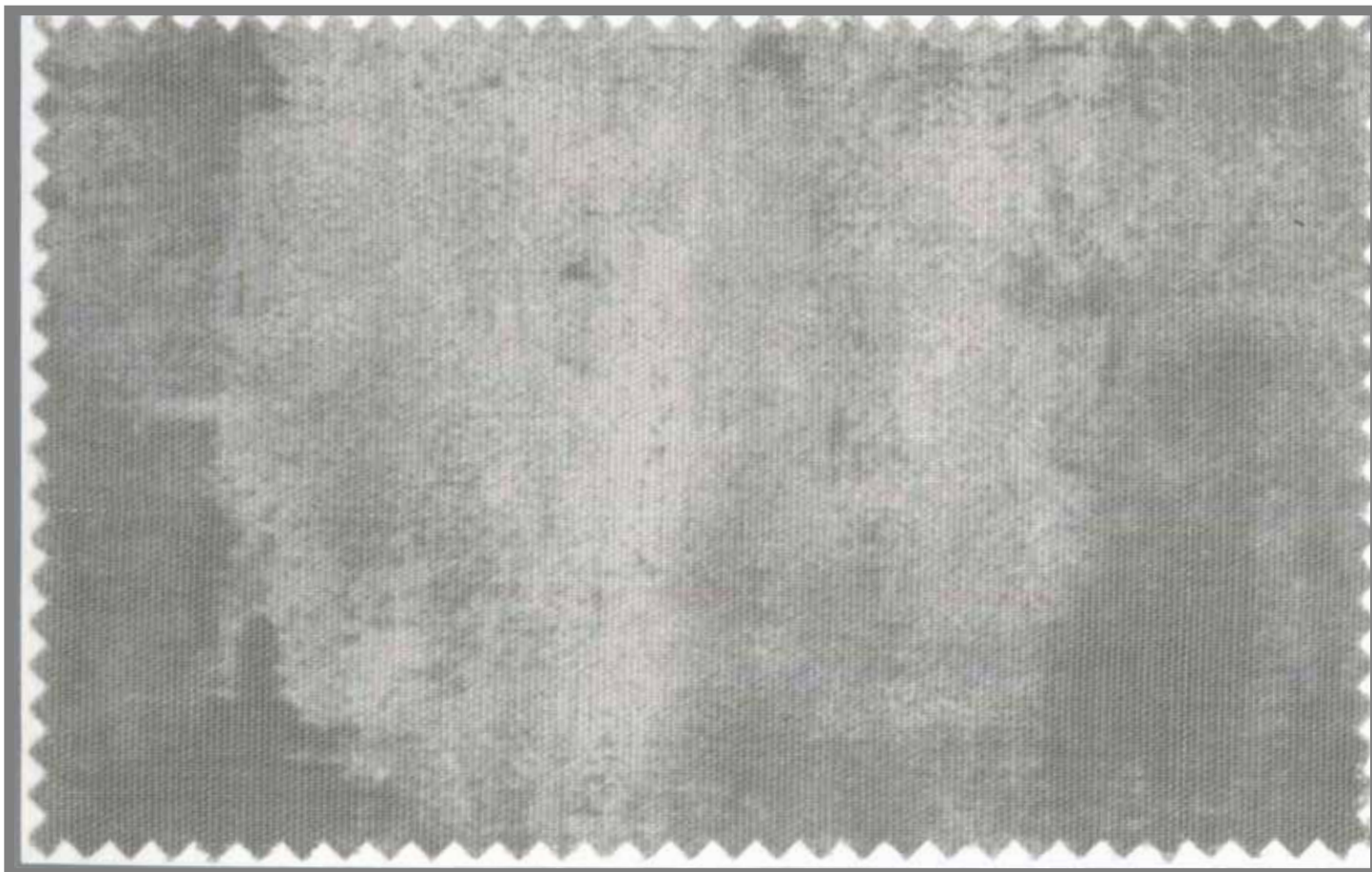
Handwash  
Line drip dry  
Cool iron  
Do not bleach  
Do not tumble dry  
Do not dry clean



# Monsoon *- printed texture*



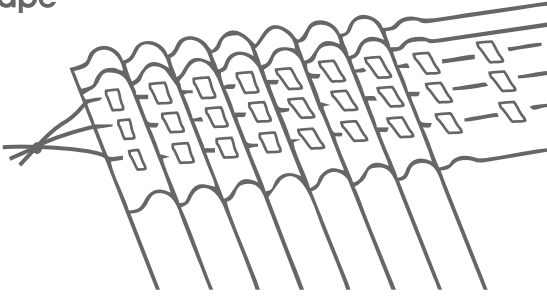
Linen



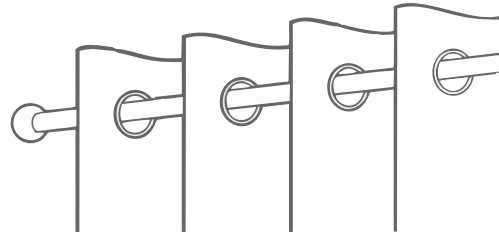
Smoke

# Monsoon – *printed texture*

Tape



Eyelet



## AVAILABLE SIZES - TAPE

- 230 x 218cm - standard tape lined
- 230 x 250cm - standard tape lined

## AVAILABLE SIZES - EYELETS

- 230 x 220cm - eyelets lined (14 eyelets per curtain)
- 230 x 252cm - eyelets lined (14 eyelets per curtain)

## AVAILABLE COLOURS

- Linen
- Smoke

## PRODUCT INFO

52% Polyester/48% Cotton print  
Lined with white polycotton lining.

## WASH CARE INSTRUCTIONS

- Handwash
- Line drip dry
- Cool iron
- Do not bleach
- Do not tumble dry
- Do not dry clean



## Dusk – self-lined texture



Lake



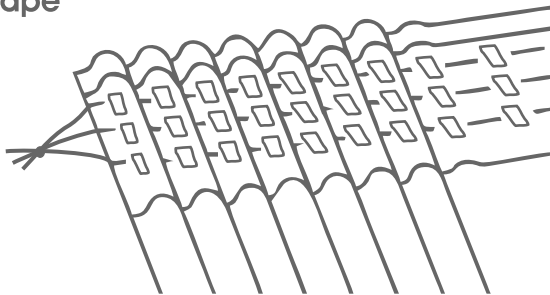
Stone



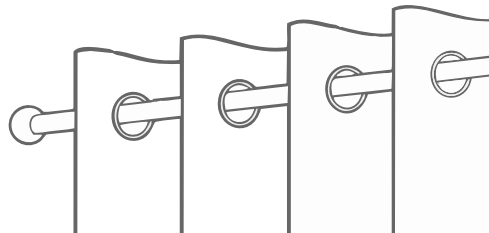
Putty

# Dusk – *self-lined texture*

## Tape



## Eyelet



### AVAILABLE SIZES - TAPE

265 x 218cm - standard tape self-lined

265 x 250cm - standard tape self-lined

### AVAILABLE SIZES - EYELETS

265 x 220cm - eyelets self-lined *(16 eyelets per curtain)*

265 x 252cm - eyelets self-lined *(16 eyelets per curtain)*

### AVAILABLE COLOURS

- Lake
- Putty
- Stone
- Coconut

### STUART GRAHAM FABRIC REFERENCE

- Dreamland Lake
- Dreamland Putty
- Dreamland Stone
- Dreamland Coconut

### PRODUCT INFO

100% Polyester

Self-lined 3 pass coated blackout (total blackout)

### WASH CARE INSTRUCTIONS

- Cool hand/machine wash
- Do not dry clean
- Cool iron on face side only
- Do not steam
- Do not tumble dry
- Do not bleach
- Line dry in shade
- Do not rub or wring.



# Twilight *- self-lined*



Canvas



Mineral

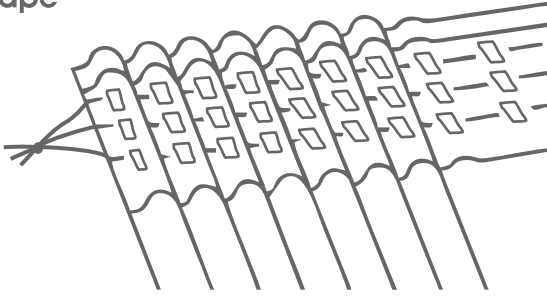


Granite



# Twilight *- self-lined*

## Tape



## AVAILABLE SIZES - TAPE

265 x 218cm - standard tape self-lined

265 x 250cm - standard tape self-lined

## AVAILABLE COLOURS

- Canvas
- Mineral
- Granite

## STUART GRAHAM FABRIC REFERENCE

- Sundown Canvas
- Sundown Mineral
- Sundown Granite

## PRODUCT INFO

100% Polyester  
Self-lined (woven blackout)

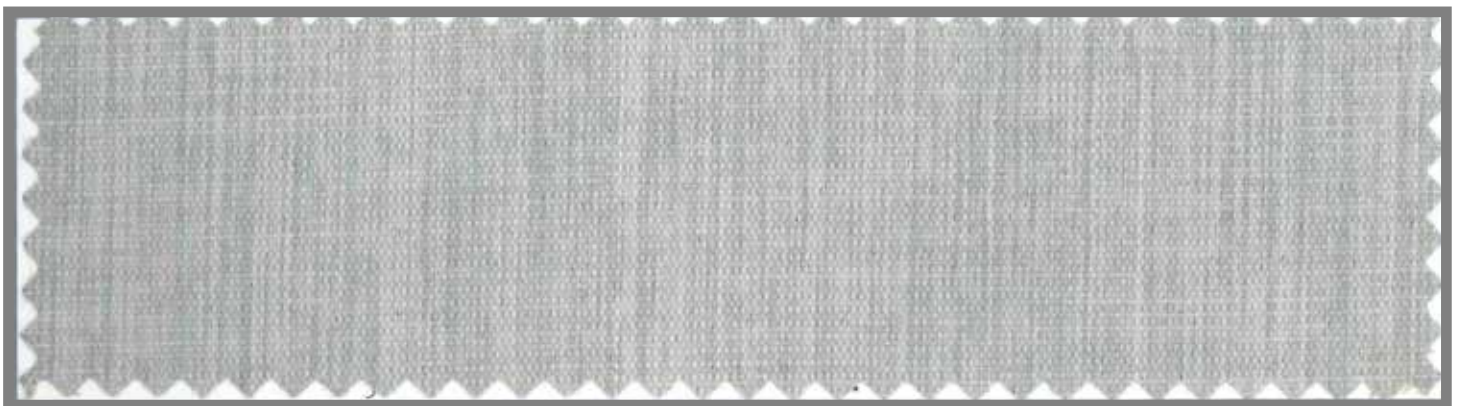
## WASH CARE INSTRUCTIONS

Wash 40 degrees or  
Dry clean professionally  
Cool iron  
Do not tumble dry  
Do not bleach

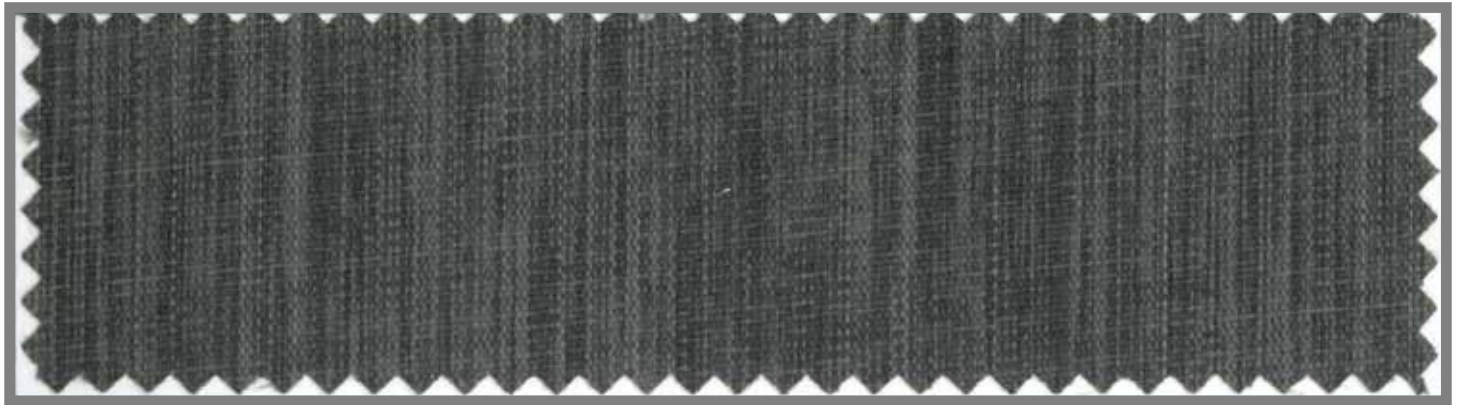
# Midnight *— self-lined*



Earth



Grey



Charcoal

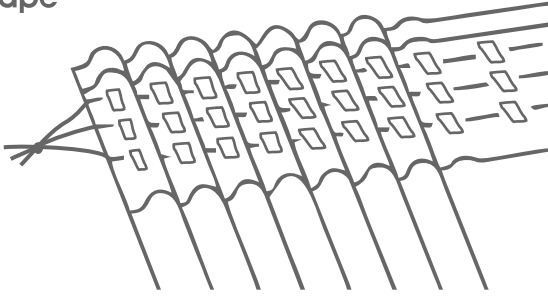


Blue

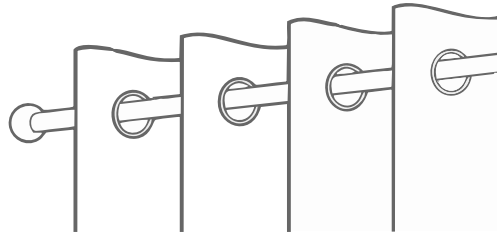


# Midnight *- self-lined*

Tape



Eyelet



## AVAILABLE SIZES - TAPE

- 230 x 218cm - standard tape self-lined
- 230 x 250cm - standard tape self-lined

## AVAILABLE SIZES - EYELETS

- 230 x 220cm - eyelets self-lined *(14 eyelets per curtain)*
- 230 x 252cm - eyelets self-lined *(14 eyelets per curtain)*

## AVAILABLE COLOURS

- Earth
- Grey
- Charcoal
- Blue

## PRODUCT INFO

100% Polyester  
Self-lined 3 pass coated blackout (total blackout)

## WASH CARE INSTRUCTIONS

- Cool hand/machine wash
- Cool iron on face side only
- Do not steam
- Do not tumble dry
- Do not bleach
- Line dry in shade
- Do not rub or wring.

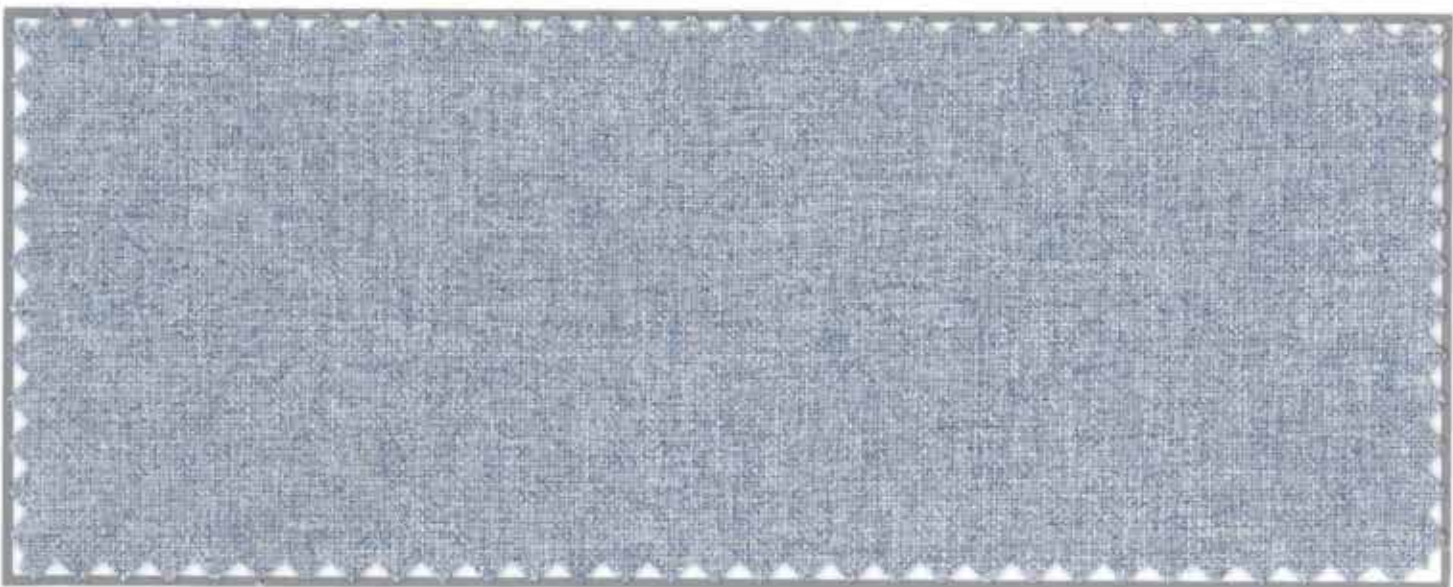
## Sweet Dreams *- self-lined texture*



Natural



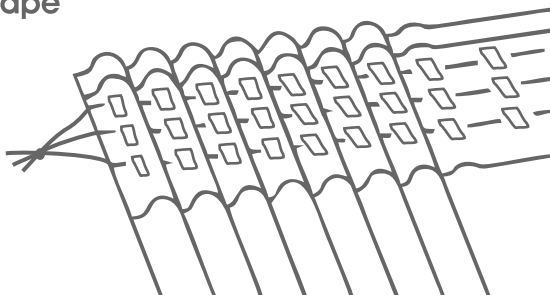
Greystone



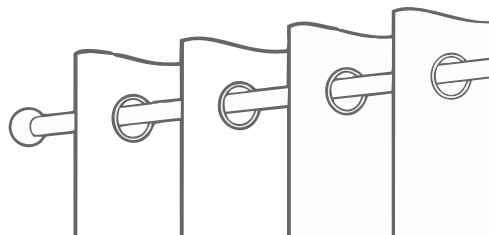
Sky

# Sweet Dreams *- self-lined texture*

Tape



Eyelet



## AVAILABLE SIZES - TAPE

230 x 218cm - standard tape self-lined

230 x 250cm - standard tape self-lined

## AVAILABLE SIZES - EYELETS

230 x 220cm - eyelets self-lined (14 eyelets per curtain)

230 x 252cm - eyelets self-lined (14 eyelets per curtain)

## AVAILABLE COLOURS

- Natural
- Greystone
- Sky

## PRODUCT INFO

100% Polyester

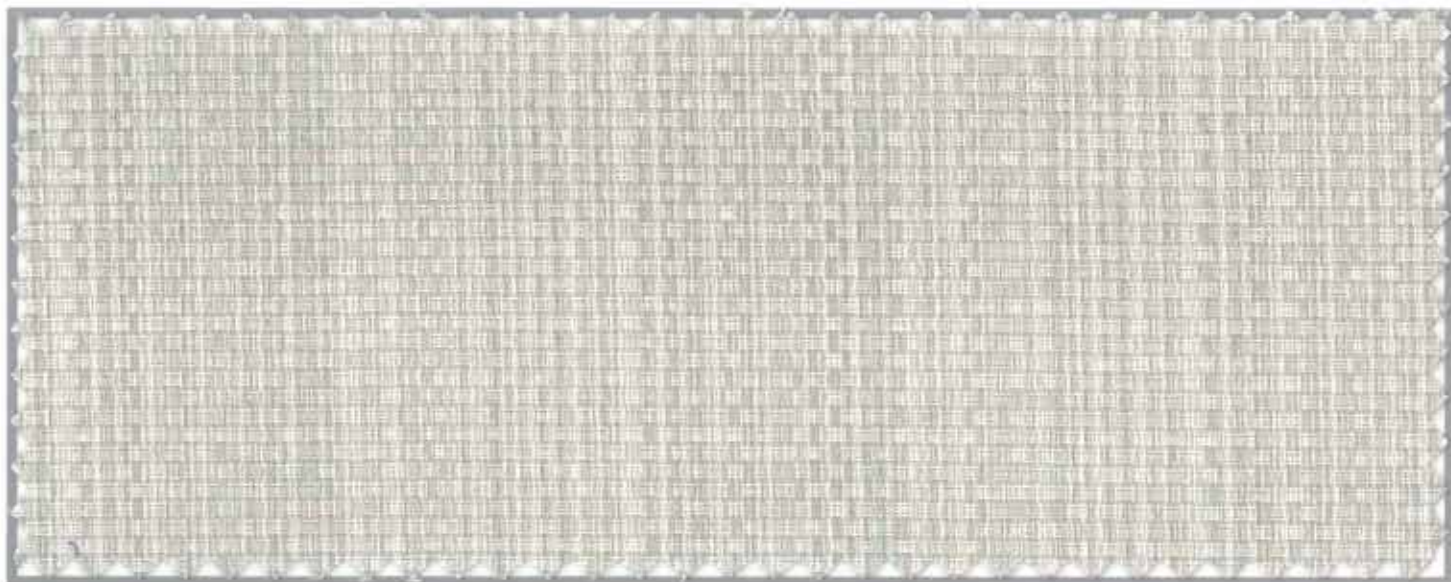
Self-lined 3 pass coated blackout (total blackout)

## WASH CARE INSTRUCTIONS

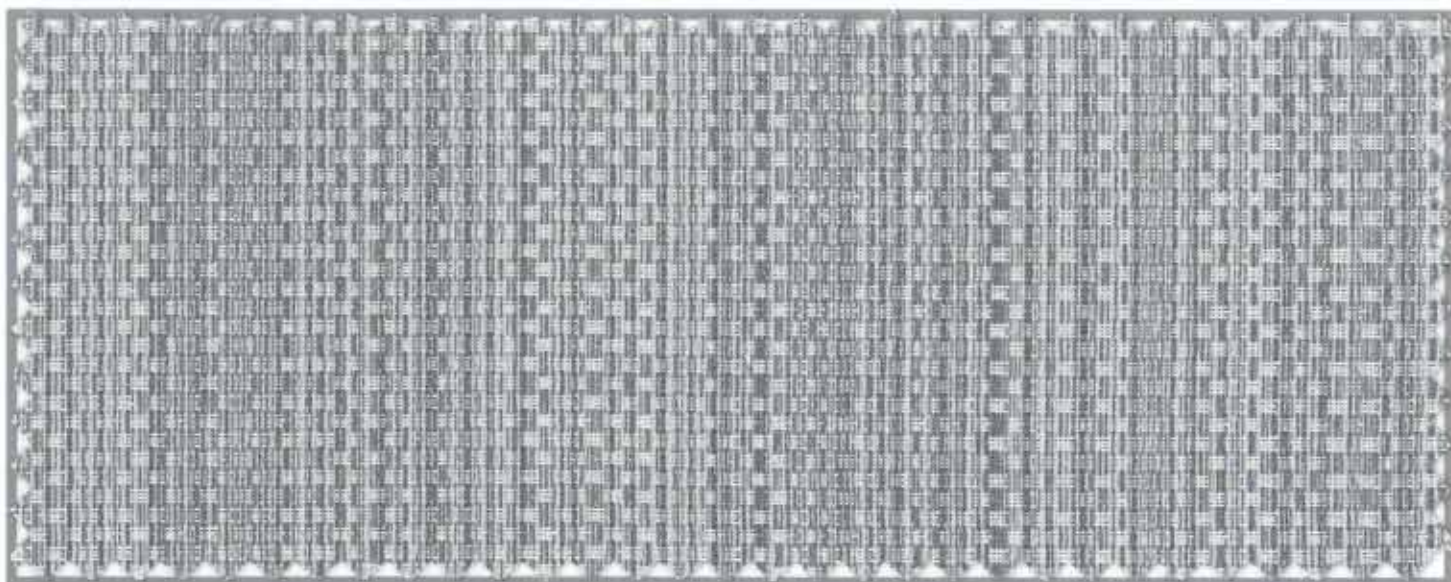
- Cool hand/machine wash
- Do not dry clean
- Cool iron on face side only
- Do not steam
- Do not tumble dry
- Do not bleach
- Line dry in shade
- Do not rub or wring.



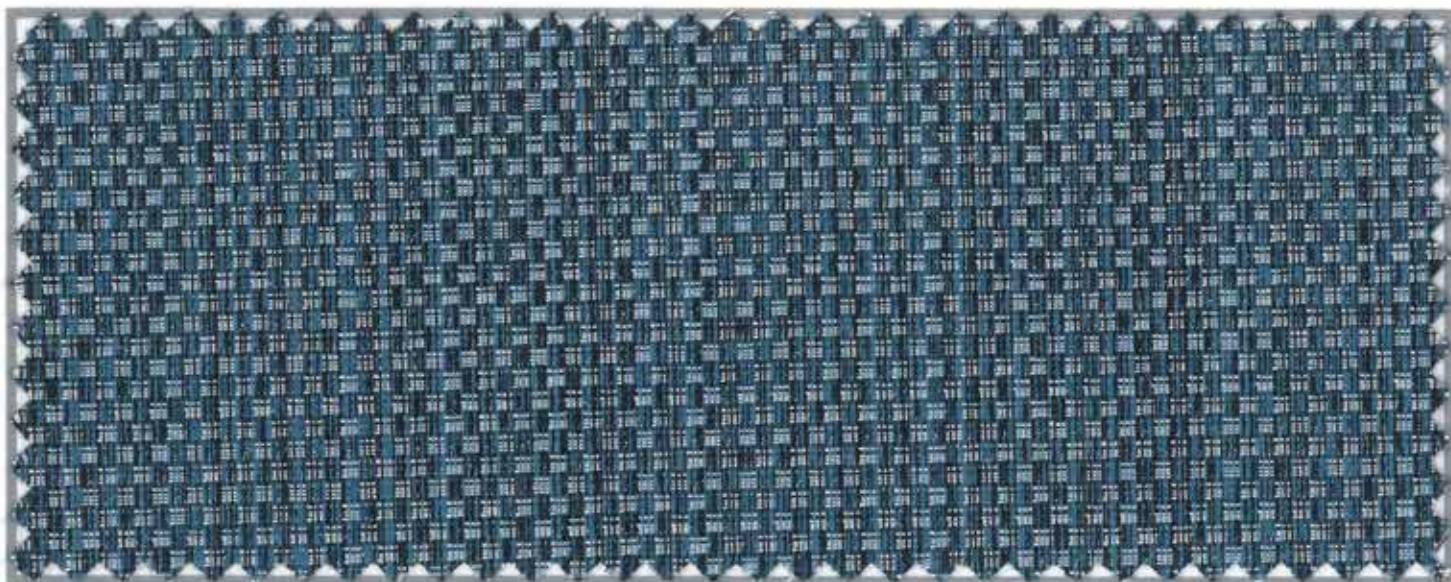
# Slumber – *self-lined texture*



Natural



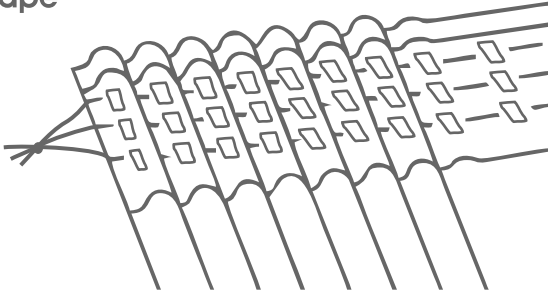
Steel



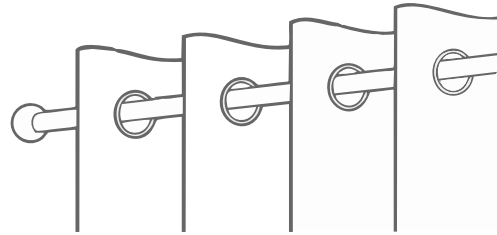
Lagoon

# Slumber – *self-lined texture*

Tape



Eyelet



## AVAILABLE SIZES - TAPE

230 x 218cm - standard tape self-lined  
230 x 250cm - standard tape self-lined

## AVAILABLE SIZES - EYELETS

230 x 220cm - eyelets self-lined *(14 eyelets per curtain)*  
230 x 252cm - eyelets self-lined *(14 eyelets per curtain)*

## AVAILABLE COLOURS

- Natural
- Steel
- Lagoon

## PRODUCT INFO

100% Polyester  
Self-lined 3 pass coated blackout (total blackout)

## WASH CARE INSTRUCTIONS

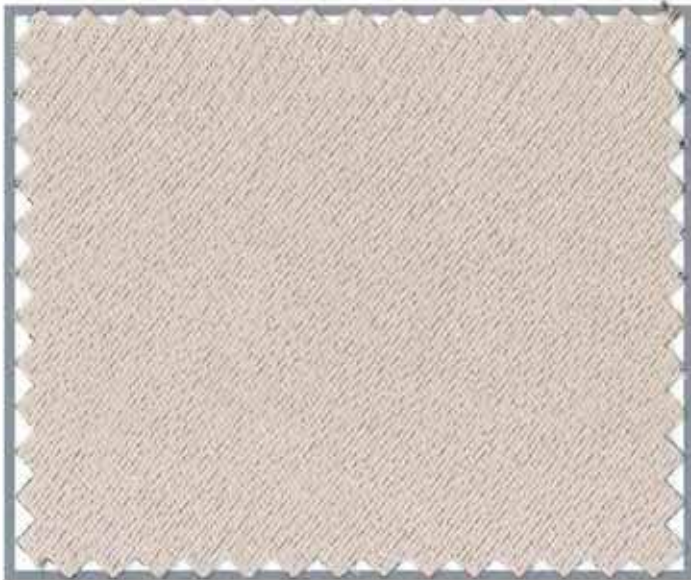
Cool hand/machine wash  
Do not dry clean  
Cool iron on face side only  
Do not steam  
Do not tumble dry  
Do not bleach  
Line dry in shade  
Do not rub or wring.



# Night Time – *woven blackout*



White



Cream



Greystone



Smoke

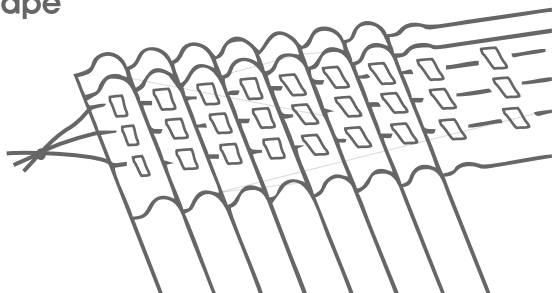


Slate

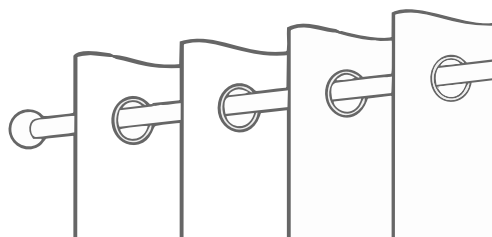


# Night Time – woven blackout

Tape



Eyelet



## AVAILABLE SIZES - TAPE

- 265 x 218cm - standard tape self-lined
- 265 x 250cm - standard tape self-lined

## AVAILABLE SIZES - EYELETS

- 230 x 220cm - eyelets self-lined (14 eyelets per curtain)
- 230 x 252cm - eyelets self-lined (14 eyelets per curtain)

## AVAILABLE COLOURS

- White
- Cream
- Greystone
- Smoke
- Slate

## STUART GRAHAM FABRIC REFERENCE

- Night Time White
- Night Time Cream
- Night Time Greystone
- Night Time Smoke
- Night Time Slate

## PRODUCT INFO

100% Polyester  
Woven blackout  
Not total blackout

## WASH CARE INSTRUCTIONS

Wash 30 degrees or  
Dry clean professionally  
Warm iron  
Do not bleach  
Do not tumble dry

Solarline *- self-lined*



White



Dune



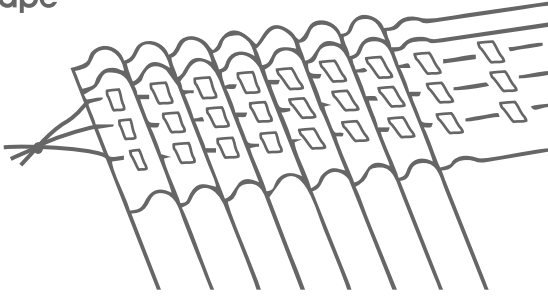
Quarry



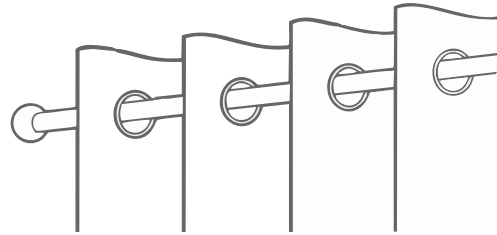
Steel

# Solarline *- self-lined*

## Tape



## Eyelet



### AVAILABLE SIZES - TAPE

- 265 x 218cm - standard tape self-lined
- 265 x 250cm - standard tape self-lined

### AVAILABLE SIZES - EYELETS

- 230 x 220cm - eyelets self-lined *(14 eyelets per curtain)*
- 230 x 252cm - eyelets self-lined *(14 eyelets per curtain)*

### AVAILABLE COLOURS

- White
- Dune
- Quarry
- Steel

### STUART GRAHAM FABRIC REFERENCE

- Solarline White
- Solarline Dune
- Solarline Quarry
- Solarline Steel

### PRODUCT INFO

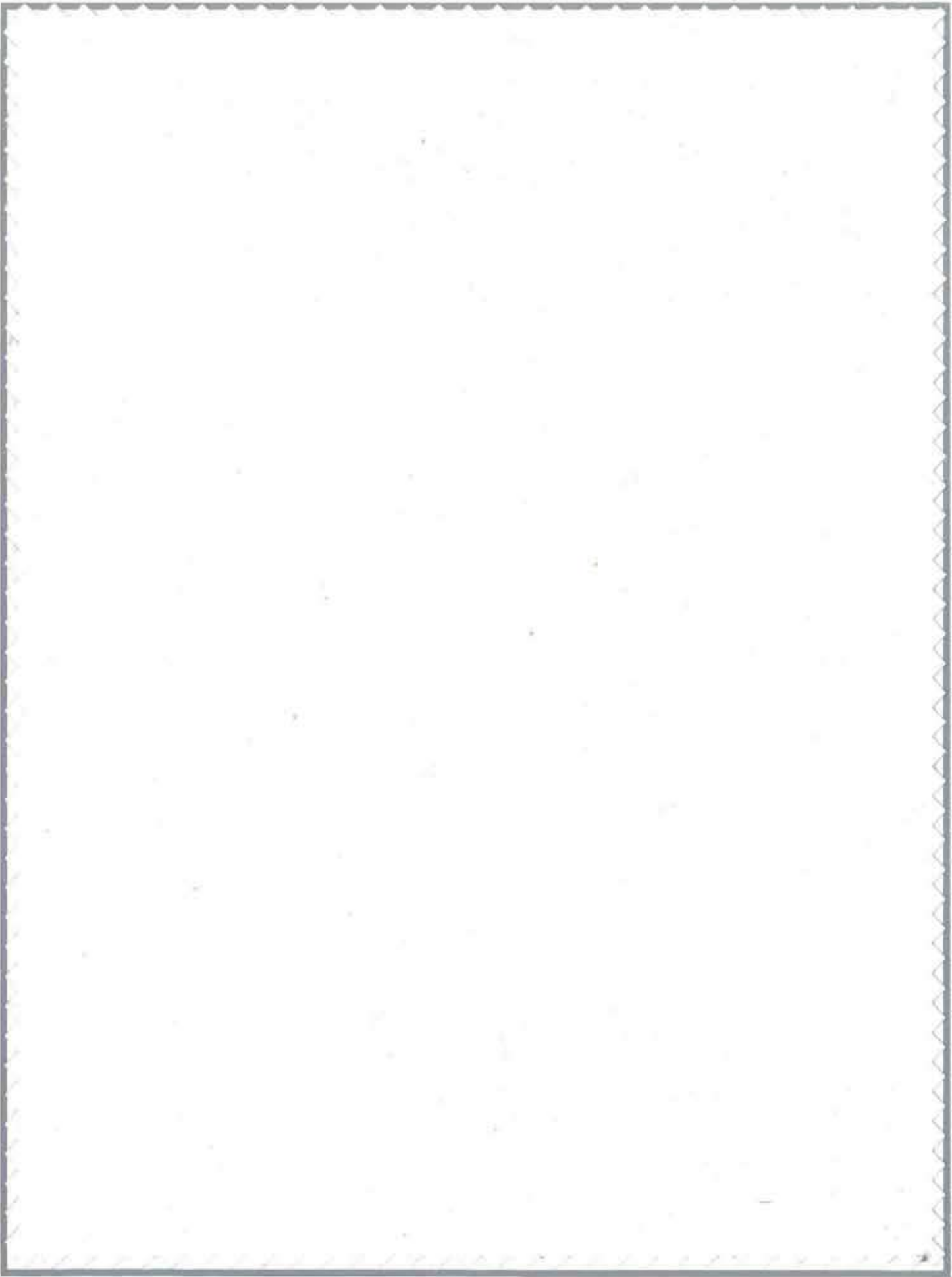
100% Polyester  
Coated blackout (total blackout)

### WASH CARE INSTRUCTIONS

- Cool hand/machine wash
- Do not dry clean
- Cool iron on face side only
- Do not steam
- Do not tumble dry
- Do not bleach
- Line dry in shade
- Do not rub or wring.



**Blockout** - *blockout lining*

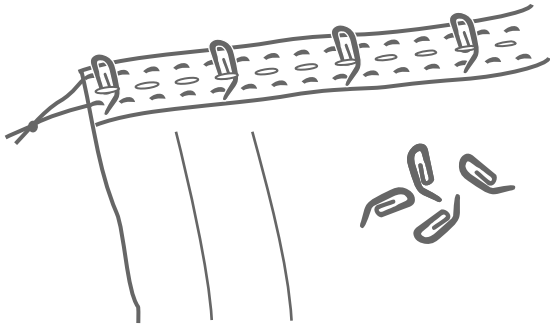


White/White

# Blockout *- blackout lining*

## Lining tape

(hooks not included)



## AVAILABLE SIZES - LINING TAPE

130 x 210cm - lining tape *(attaches to the back of a taped curtain)*

130 x 240cm - lining tape *(attaches to the back of a taped curtain)*

265 x 210cm - lining tape *(attaches to the back of a taped curtain)*

265 x 240cm - lining tape *(attaches to the back of a taped curtain)*

## AVAILABLE COLOURS

- White/white

## STUART GRAHAM FABRIC REFERENCE

- Blockout lining White/White

## PRODUCT INFO

80% Polyester/20% Cotton

3 Pass coated blackout (total blackout)

Lining tape allows this curtain to be attached to the back of any taped curtain by using standard curtain hooks.

This product can only be used in conjunction with a taped curtain (lined or unlined) to block out light.

It is not necessary to gather the blackout curtain before attaching to the taped curtain.

## WASH CARE INSTRUCTIONS

Hand/machine wash

Do not dry clean

Cool iron

Do not bleach

Do not steam

Do not tumble dry